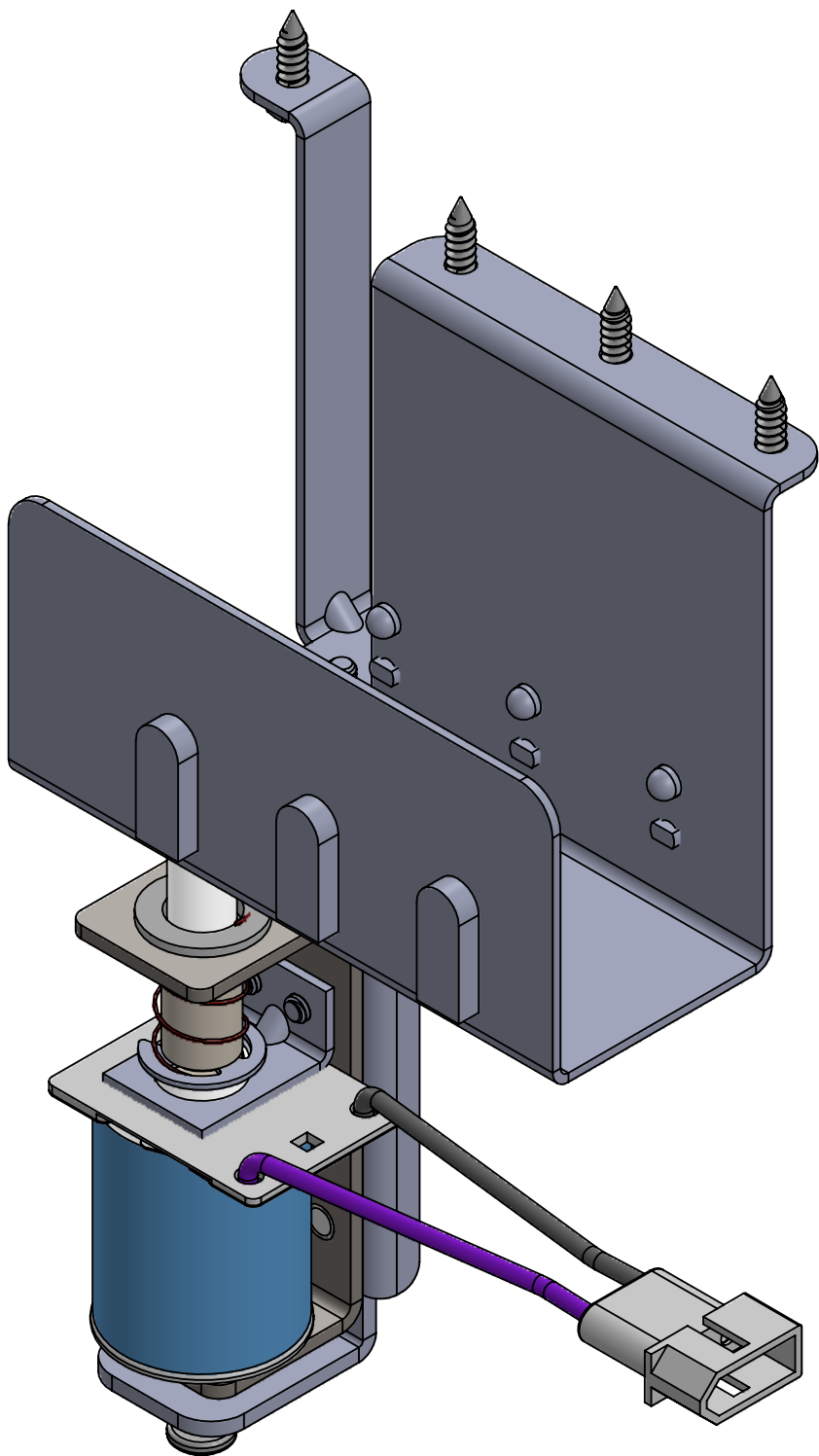
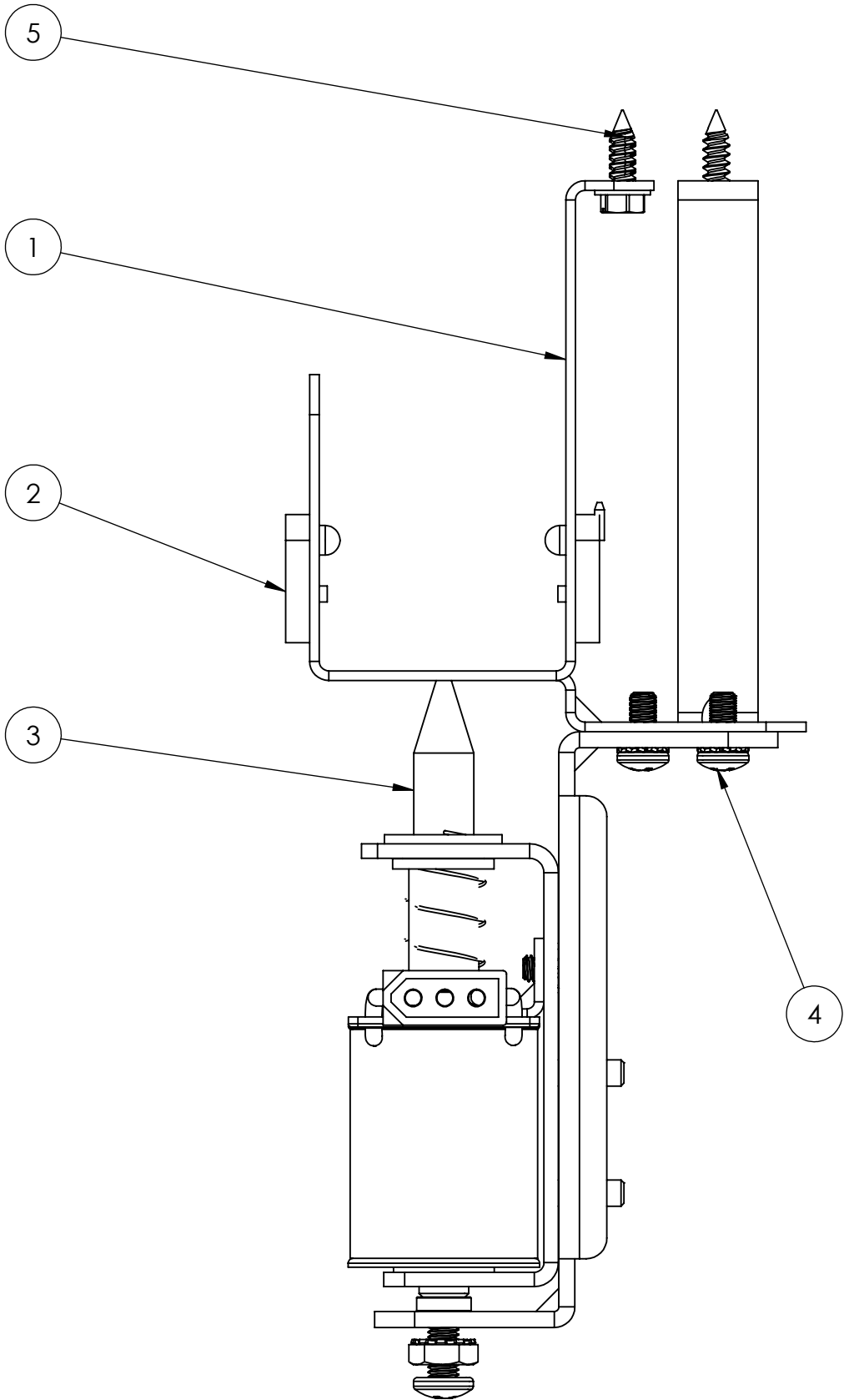
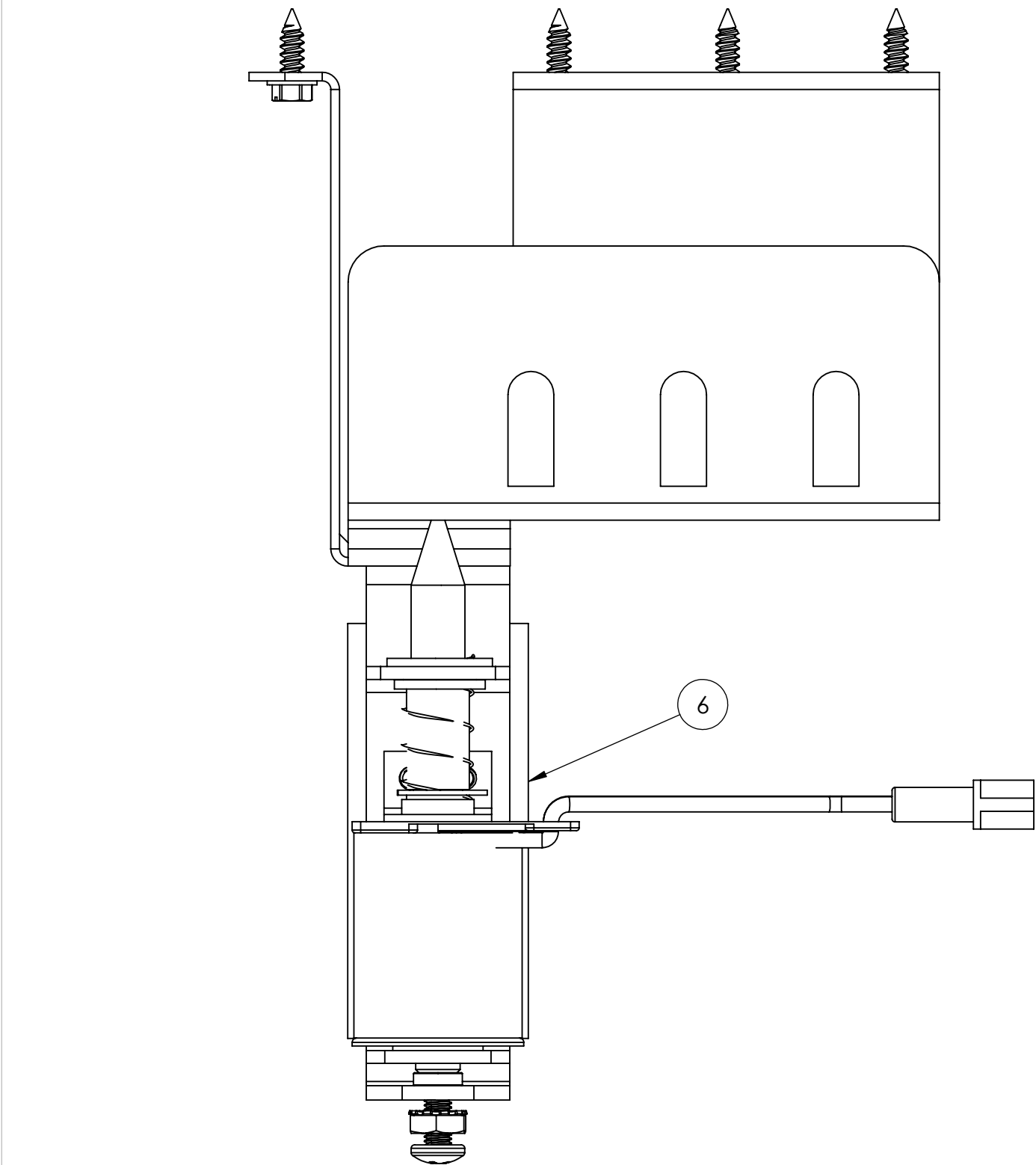

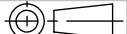


ITEM NO.	PART NUMBER	DESCRIPTION	QTY.
1	SUB0005-00	UNDERTROUGH BRACKET	1
2	WCA0016-00	OPTEK INFARED LED ASSY	3
3	ASM0017-00	ADJUSTABLE DOWN POST ASSEMBLY	1
4	MAS1008-06	8-32 X 3/8 PPH SEMS MS ZINC	4
5	SMS2008-08	#8 X 1/2" HWH SMS ZINC	4



	UNLESS OTHERWISE SPECIFIED: NO SHARP CORNERS AND EDGES. TOLERANCES (DIMS ARE IN INCHES) ANGULAR: MACH ± .5 DEG BEND ± 1 DEG FRACTIONAL: ± .020 .X- ±.015 .XX- ±.010 .XXX- ±.005 .XXXX- ±.0001 FINISH 125RMS		AMERICAN PINBALL 1448 Yorkshire Dr. Streamwood, IL 60178	
	MATERIAL: AS PER BOM		DESCRIPTION: 3 BALL UNDERTROUGH ASSEMBLY	
	FINISH: -		SIZE C	DWG. NO. ASM0031-00
	DO NOT SCALE DRAWING 		DRAWN BY: ZR	DRAWN DATE: 9.22.2017 SCALE: 1:1 SHEET 1 OF 1